

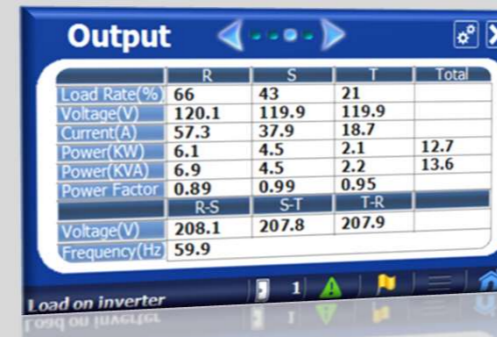
KRONOS UL Series Three Phase On-Line UPS



10KVA ~ 40KVA



- 3 Level IGBT Technology
- High Efficiency in Online Mode
- High Input Power Factor >0.99
- Output Power Factor 1.0
- Power Scalable and Parallel Redundancy
- Built-in High Current Battery Charger
- Flexible Battery Configuration
- Standard Separate or Common Batteries for Parallel Systems
- Available DC Start Function
- Strong Over Load Capacity
- Advanced Operation Interface -- Colorful LCD Touch Screen



Specifications

Capacity	10KVA	15KVA	20KVA	30KVA	40KVA	
Input	Voltage					
	208V 3 Phase + N					
	Voltage Tolerance					
	±20% @100% load, -40% ~-20% @50% load					
	Frequency					
40~70Hz						
Power Factor						
≥ 0.99						
THDi						
≤3% @100% load						
Output	Voltage					
	200/208/220V 3 Phase + N					
	Voltage Tolerance					
	±1% (Static Load)					
	Frequency					
	50/60Hz					
	Frequency Tolerance					
	0.05% (free running)					
Power Factor						
1.0						
Crest Factor						
3:1						
Voltage Harmonic Distortion						
<1% with linear load						
<3% with distorting load						
Overload						
110% for 60 minutes, 125% for 10 minutes, 150% for 1 minutes						
Bypass	Voltage					
	200/208/220V 3 Phase + N					
	Voltage Tolerance					
	±5%~±30% (Programmable)					
Frequency						
50/60Hz						
Frequency Tolerance						
±1Hz/±3Hz (Selectable)						
Battery	Number of Batteries (Configurable)					
	±8~10pcs					
	Charging Current @ 100%load	3.5 A	5 A	7 A	10 A	13 A
	Max. Charging Current	10 A	15 A	21 A	30 A	42 A
	Common Battery for Parallel	Yes				
Internal Battery	Up to 12V 7/9AH x 40pcs	Up to 12V 7/9AH x 60pcs		N.A.		
Efficiency	VFI Mode	93.5%	94.0%	94.5%	94.5%	94.5%
	ECO Mode	>98%				
Function	DC Start	Yes				
	Parallel (Optional)	Up to 6 units				
Physical	Dimensions (W x D x H) [mm]	260 x 850 x 890	410 x 850 x 977		410 x 850 x 1250	
	Weight (w/o battery) [kg]	76	105	115	155	160
	Protection Grade	IP20				
Interface	Display and MMI	4.3" Colorful LCD Touch Screen				
	Built-in Communication Port	USB, EPO, Dry Contact				
	Optional Communication	2 Communication Slots for SNMP Card, RS-485 Modbus Card, Dry Contact Card				
Environment	Operation Temperature	0~40°C				
	Operation Humidity	0~95% (without condensation)				
	Altitude	< 1000 m without derating				
	Nose Level (at 1 meter)	< 55dB			<60 dB	
Tested to Standard	Safety	UL 1778 (CSA C22.2 NO.107.3) 5th edition 2017				
	EMC	FCC 15B, class A				
	Mark	UL/cUL, FCC				

AblereX Electronics Co., Ltd.
 1F, No.3, Ln. 7, Baogao Rd., Xindian Dist., New Taipei City 23144, Taiwan R.O.C.
 Tel: +886-2-2917-6857 Fax: +886-2-2913-1705
<http://www.ablerex.com.tw> Email: ablerex@ablerex.com.tw

