

# External Bypass Switch Box



■ RacPDU-115A



■ RacPDU-120B



■ RacPDU-130H



■ RacPDU-210D



■ RacPDU-216G



■ MPDU-250

## Maintenance Bypass PDU 15A ~ 50A

The maintenance bypass switch with power output distribution allows you to manually transfer the connected equipment from UPS output to utility power and vice versa. It is also a type of plug-and-play power output distribution for MSRT Pro and Ares series. With attached brackets, you may fix the unit in Tower or Rack Mount accordingly.

Model Name	Rating	AC Input Plug (Receptacle)& cord length	Connect to UPS Input	Connection to UPS Output & cord length	Output Receptacles/ protection
<b>RacPDU-115A</b>	120V 1KVA	NEMA 5-15P Attached 10-foot cord	NEMA	NEMA 5-15P * 1 Attached 6-foot cord	NEMA 5-15R * 8
			5-15P	NEMA 5-15P * 1 Attached 6-foot cord	NEMA 5-15R * 8
<b>RacPDU-120B</b>	120V 2KVA	NEMA 5-20P Attached 10-foot cord	NEMA	NEMA 5-20P * 1 Attached 6-foot cord	NEMA 5-15R * 4
			5-20P	NEMA 5-20P * 1 Attached 6-foot cord	NEMA 5-20R * 4
<b>RacPDU-130H</b>	120V 3KVA	NEMA L5-30P Attached 10-foot cord	NEMA	NEMA L5-30P * 1 Attached 6-foot cord	NEMA 5-20R * 6 with 20A circuit breaker * 2
			L5-30P	NEMA L5-30P * 1 Attached 6-foot cord	NEMA 5-30R * 1
<b>RacPDU-210D</b>	230V 2KVA	N/A	IEC C14	IEC C14 * 1 Attached 6-foot cord	IEC C13 * 8
			IEC C14	IEC C14 * 1 Attached 6-foot cord	IEC C13 * 8
<b>RacPDU-216G</b>	230V 3KVA	N/A	IEC C20	IEC C20 * 1 Attached 6-foot cord	IEC C19 * 2
					IEC C13 * 6
<b>RacPDU-230F</b>	230V 4.5K/6KVA	Terminal	NAMA L6-30R	Terminal	Terminal
<b>MPDU-250</b>	230V 4.5K~10K	Terminal	Terminal	Terminal	Terminal + IEC C19 * 4 + IEC C13 * 8



■ TowPDU 2200

## Parallel Bypass Box 60A-200A

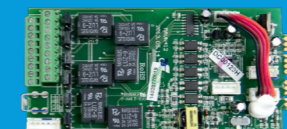
The parallel maintenance bypass switch allows you to manually transfer the connected equipments from UPS output to utility power and vice versa. For different capacity of UPS in parallel, you may choose one of the appropriated models listed below considered to the total current. With attached brackets, you may fix the unit in Tower or Rack Mount accordingly.

Model Name	Description	Dimensions(WxHxD, mm/inch)	Application
<b>RacPDU-260</b>	Max. 60A	440x176x124/17.3x7.0x4.9	Max. 2pcs 4.5K/6K or 1pce 8K/10K
<b>RacPDU-2120</b>	Max. 120A	440x176x124/17.3x7.0x4.9	Max. 4pcs 4.5K/6K or 2pcs 8K/10K
<b>RacPDU-2200</b>	Max. 200A	440x176x124/17.3x7.0x4.9	Max. 4pcs 8K/10K

# UPS Accessories



■ Dry Contact Board (DCE-B)



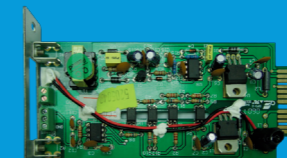
■ Dry Contact Board (DCE-C)



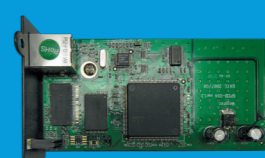
■ USB Card



■ 2nd RS232 Card



■ RS485 Card

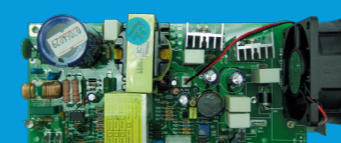


■ SNMP Card

## Communication Flexibility

We offer a complete set of communication solutions and accessories designed for different series of Ablerex UPS using in electrical and computer applications.

Accessory	Application
<b>Dry Contact Board</b>	For Janus/XL Series, MSRT Pro, Ares, MSII and MSIII series
<b>SNMP Card</b>	For Janus/XL Series, MSRT Pro, Ares, MSII and MSIII series
<b>USB Card</b>	For Janus/XL Series, MSRT Pro, Ares, MSII and MSIII series
<b>2nd RS232 Card</b>	For Janus/XL Series, MSRT Pro, Ares, MSII and MSIII series
<b>RS485 Card</b>	For MSII / MSIII in supporting J-Bus/Mod-Bus applications

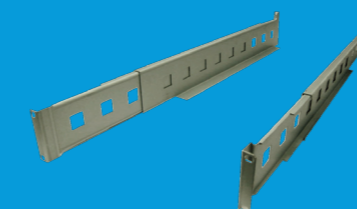


## 200W Charger

It provides 36~96Vdc voltage adjustable features by jumper setting, which can be widely used in variable series of UPS models.

## Optional External 1000W Charger

With its isolation conversion technology plus precision control, this charger might provide 192/240Vdc which is suitable for current MSII/MSIII series, the optional charge can be installed in parallel operation up to 4 units.



## Rail Kit

It can be widely used in supporting rack and convertible type UPS and battery banks in 19" rack system.