

# // Wireless Battery Monitoring System



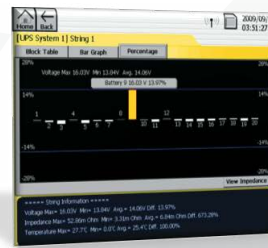
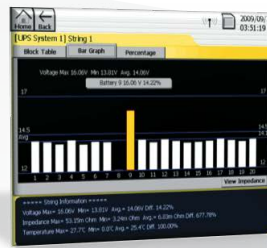
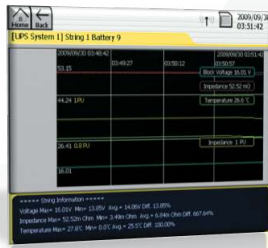
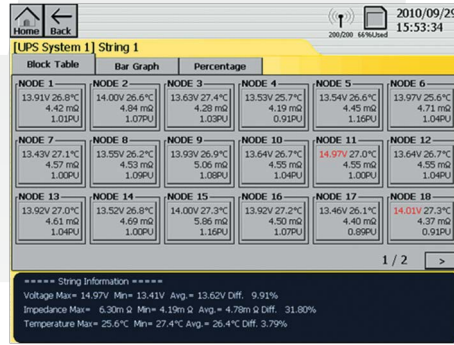
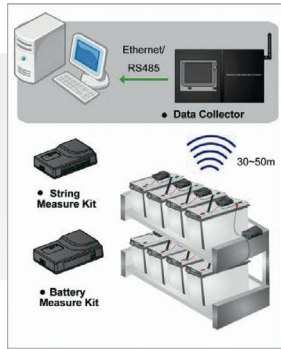
- Wireless Communication
- Easy Installation
- Save Cost
- Graphic LCD Touch Screen
- Real Time Monitoring: Block Voltage, Block Impedance, Temperature, String Voltage & Current
- Alarm via email & dry contact
- History Databases
- Colorful Bar/Curve Diagrams
- User-default Configurations & Deviation Levels
- Provides Ethernet/RS485 for Remote Monitoring

## BMS-DC Data Collector

<b>Input Power Supply</b>	12Vdc, 35~60Vdc
<b>Power Consumption</b>	18W, Max.
<b>Measurement Communication</b>	RF 2.4G for Wireless*
<b>Communication</b>	Ethernet TCP/IP, RS 485
	Alarm Output Contact x1
	External Trigger Contact x 1
<b>Max. Monitoring Kits</b>	256 Kits**
<b>Display</b>	6.4" LCD Touch Screen
<b>Store Media</b>	SD/MMC Flash Memory Card, 2 Gigabyte
<b>Dimensions WxHxD(mm/inch)</b>	378.0 x 249.8 x 81.3 / 14.9 x 98.3 x 32.0
<b>Weight (kgs/lbs)</b>	3 / 6.6

## BMS-SMK String Measure Kit

<b>Input Impedance</b>	>1MΩ	
<b>Voltage</b>	<b>Range</b>	Up to 750VDC
	<b>Accuracy</b>	±0.2%
<b>Current****</b>	<b>Range</b>	Up to 3000A
	<b>Resolution</b>	±3%
<b>Temperature***</b>	<b>Range</b>	0~100°C / 32~212°C
	<b>Accuracy</b>	±1°C / 1.8°C
<b>Measurement Communication</b>	RF 2.4G for Wireless*	
<b>Sample Rate</b>	1Hz	
<b>Input Power Supply</b>	35~60Vdc	
<b>Power Consumption</b>	3.0W, Max.	
<b>Dimensions WxHxD(mm/inch)</b>	100.0 x 27.3 x 70.0 / 3.94 x 1.07 x 2.76	
<b>Weight (gs/ozs)</b>	89 / 3.1	



## BMS-BMK Battery Measure Kit

<b>Block Voltage</b>	2V	6V	12V	
<b>Input Impedance</b>	>1MΩ			
<b>Voltage</b>	<b>Range</b>	1.48~4V	4.2~8V	8.5~16V
	<b>Accuracy</b>	±10mV		
<b>Impedance</b>	<b>Battery Capacity</b>	Full range	<65Ah	>66Ah
	<b>Resolution</b>	0.01~0.03mΩ	0.10mΩ	0.03mΩ
<b>Temperature(3)</b>	<b>Range</b>	0~100°C / 32~212°C		
	<b>Accuracy</b>	±1°C / 1.8°C		
<b>Measurement Communication</b>	RF 2.4G for Wireless*			
<b>Sample Rate</b>	1Hz			
<b>Power Consumption</b>	0.5W, Max.			
<b>Dimensions WxHxD(mm/ inch)</b>	100.0 x 27.3 x 70.0 / 3.94 x 1.07 x 2.76			
<b>Weight (gs/ozs)</b>	97 / 3.4			

## Accessories

<b>BMS-DPS</b>	DC Power Supply Input: 90~260Vac Output: 48Vdc, 15Watt
<b>BMS-TES</b>	Temperature Sensor 0~100°C ±1°C / 32~212°C ± 1.8°C
<b>BMS-HCT</b>	Hall effect Current Transformer 50A, 100A, 300A, 600A, 2000A
<b>BMS-BTA</b>	Battery Terminal Auxiliary Connector 6Φ, 8Φ, 10Φ
<b>BMS-ANT</b>	2.4G Antenna

\*The maximum distance of transmission is 50 meters for open site and less than 30 meters is recommended.

\*\*The total number of Battery Measure Kit and String Measure Kit would not be more than 256.

\*\*\*An additional temperature sensor is required for temperature measurement.

\*\*\*\*An additional current transformer is required for current measurement.